

FAMILY FUN!

St. Helena's Parish **CARNIVAL 2023**

MONDAY, MAY 1 THROUGH SATURDAY, MAY 6

UNDER THE BIG TOP!

THE OASIS BAR & GRILL

ALL YOUR FAVORITE CARNIVAL FOOD & DRINK

AND
ENTERTAINMENT EVERY NIGHT

Monday: RICK & CONNIE

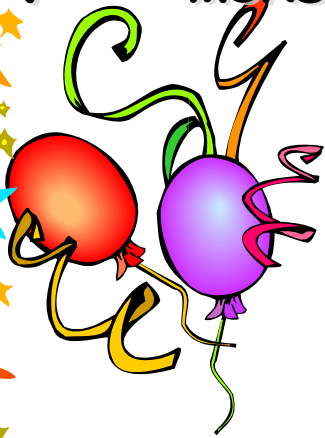
Tuesday: ELVIS & CO.

Wednesday: THE JUVENILES

Thursday: THE PETER MCCARTHY GROUP

Friday: CHORDUROY

Saturday: SONIC TWISTER

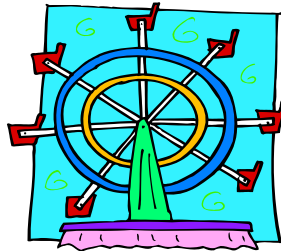


FAMILY NIGHTS

Tuesday & Wednesday

RIDE ALL NIGHT

\$30/PERSON



MEGA-PASS

**UNLIMITED RIDES
& FREE CARNIVAL ADMISSION ALL WEEK
\$50/PERSON OR \$45 IN ADVANCE**

MIDWAY OPENS AT 6PM

**CHANCES!
RAFFLES!!
PRIZES!!!**

**Masci Hall:
FOOD COURT OPENS AT 6PM
DELICIOUS BAKED GOODS
BEAUTIFUL BASKET RAFFLES
BOOK NOOK & MORE!!!**

**\$1000
PRIZE DRAWING
SATURDAY**

ST. HELENA'S BEER GARDEN

Behind Dougherty Hall

RELAX & ENJOY

DOMESTIC, IMPORTED AND CRAFT BEERS & COCKTAILS

CARNIVAL ADMISSION:

\$5 NIGHTLY (AGES 13 to 59)

**WEEKLY ADMISSION PASS ~ \$10 IN ADVANCE OR \$15 AT THE GATE
AGES 12 & UNDER ~ FREE! ~ MUST BE ACCOMPANIED BY AN ADULT**

AGES 60 & OVER ~ FREE!

NO ENTRY AFTER 9PM

St. Helena's Church, 602 Philadelphia Pike, Wilmington

302-764-0325 ~ www.sainthelenas.org